



Sparkle

Price: £400.00 with female cria at foot

Sire: Not Specified

Dam: Not Specified

Type: Female

Breed Type: Huacaya

Colour: Dark Grey

Date of Birth: 12th June 2015



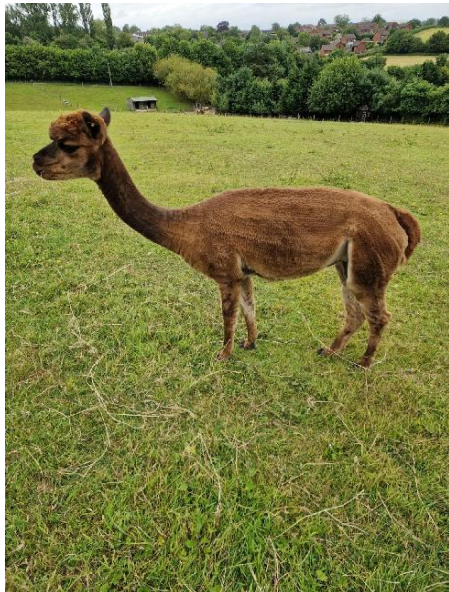
Description:

Sparkle is a modern grey and has a lovely female. Great mum and was place at the Bath & West

Prizes Won:

Bath and West 5th

Alpaca Photo 1



Alpaca Photo 2

Sparkle's Valley Sparkle - UKBAS27028 - (SERASUK06) - Female

Information	Parents	Offspring	State details	Notes
<p>Talamasca Mill of Woollen (Import) UKBAS27028 (W1978) (SUK1509) Solid Light Grey (Succinea)</p>	<p>Pomorie Highlander (Adult) 1897002 Solid White (Succinea)</p>	<p>Chispa King (SUK1510) Chispa Female (SUK1511)</p>	<p>Pomorie Highlander (Adult) 1897002 Solid White (Succinea)</p>	<p>Chispa King (SUK1510) Chispa Female (SUK1511)</p>
<p>Valley Alpaca Cancellation UKBAS27028 (W1978) (SUK1509) Light Fawn (Succinea)</p>	<p>CP Cambridge 4/16 UKBAS25521 (W1978) (SUK1509) Solid White (Succinea)</p>	<p>CP Cambridge 4/16 UKBAS25521 (W1978) (SUK1509) Solid White (Succinea)</p>	<p>CP Cambridge 4/16 UKBAS25521 (W1978) (SUK1509) Solid White (Succinea)</p>	<p>CP Cambridge 4/16 UKBAS25521 (W1978) (SUK1509) Solid White (Succinea)</p>
<p>Atlanta, Norfolk UKBAS27028 (W1978) (SUK1509) Solid Mid Fawn (Succinea)</p>	<p>Atlanta, Norfolk UKBAS27028 (W1978) (SUK1509) Solid Mid Fawn (Succinea)</p>	<p>Atlanta, Norfolk UKBAS27028 (W1978) (SUK1509) Solid Mid Fawn (Succinea)</p>	<p>Atlanta, Norfolk UKBAS27028 (W1978) (SUK1509) Solid Mid Fawn (Succinea)</p>	<p>Atlanta, Norfolk UKBAS27028 (W1978) (SUK1509) Solid Mid Fawn (Succinea)</p>
<p>Pleasy Court Erin UKBAS27028 (W1978) (SUK1509) Mid Fawn (Succinea)</p>	<p>Pleasy Court Erin UKBAS27028 (W1978) (SUK1509) Mid Fawn (Succinea)</p>	<p>Pleasy Court Erin UKBAS27028 (W1978) (SUK1509) Mid Fawn (Succinea)</p>	<p>Pleasy Court Erin UKBAS27028 (W1978) (SUK1509) Mid Fawn (Succinea)</p>	<p>Pleasy Court Erin UKBAS27028 (W1978) (SUK1509) Mid Fawn (Succinea)</p>

Alpaca Photo 3

